

SWISSCO SPEAR

30M CREW BOAT

GENERAL DATA

Registry:	Panama
Built:	2008
Official Number:	37996 – PEXT
Call Sign:	HO – 8062
IMO Number:	9536088
Length:	30.10 m
Breath:	6.80 m
Depth:	2.565 m
Classification:	Bureau Veritas
GRT / NRT:	127 / 38 tons



MAIN ENGINE / GENERATOR

Main Engine:	3 x Caterpillar 3406E 600 bhp @ 2100 rpm C rating
Gear Box:	Twin Disc MG 5114SC
Main Generator:	2 x Yanmar 4TNE 98.G1A 415V/240V/47.3kVA/50 Hz
Bow Thruster:	Ken power KP16HD 63 hp
Propulsion:	3 x Fixed Pitch Propeller
Max Speed:	22 knots
Consumption:	6,800 ltrs / 24 hrs @ 80% MCR (approx.)

ACCOMMODATION

Passengers:	50 personnel + 8 crew capacity
Crew Facility:	4 x 2 berth 1 x Gallery / Dinette / Bathroom 1 x Store 1 x Laundry
Air Conditioning:	Passenger Areas, Crew Cabin & Wheel House

OTHER INFORMATION

Deck Space:	11 m x 5.67 m = 62.37 m ²
Deck Strength:	1.5 tons / m ²
Sewage System:	Humphery MSD 10AB
Oily Water System:	Fleet guard

SAFETY EQUIPMENT

Life Raft:	4 x Self-inflatable Life Raft (120pax)
Engine Room:	CO ² Flooding System
Portable Fire:	Fitted
Pump:	

Last updated on: 14 May 2010

NAVIGATION / COMMUNICATION EQUIPMENT

Radar:	2 x Furuno Navnet 1953C 10.4" colour 72 nm LCD radar / plotter system each with 4" open arrays scanner
Echo Sounder:	Furuno LS-6100
GPS:	Furuno GP-32
EPRIB:	GME 406 mHz
Compass:	Plastimo Offshore 135 magnetic compass
Sat Phone / Fax / Email:	Fitted
Radio:	1 x HF / SSB Furuno FS – 1570 2 x VHF / DSC Furuno FM – 8800 c/w 2 x VHF antenna 2 x VHF portable ICOM IC-GM1600
Echo Sounder:	Furuno LS-6100
Navtex:	Furuno NX700
PA System:	Fitted
SART:	McMurdo
Search Lights:	2 units Fitted
Horn:	Fitted

TANK CAPACITY

Fuel Oil:	25,000 ltrs
Fresh Water:	10,000 ltrs
Lube Oil:	250 ltrs
Hydraulic Oil:	20 ltrs

Particulars given herein are without warranty as to accuracy and interest parties must satisfy themselves by inspection or other means of details of the vessel.

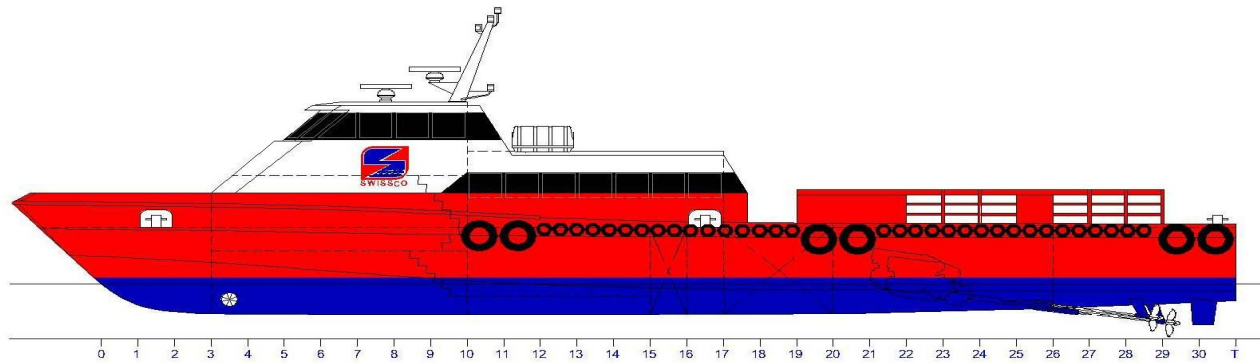


SWISSCO OFFSHORE PTE LTD

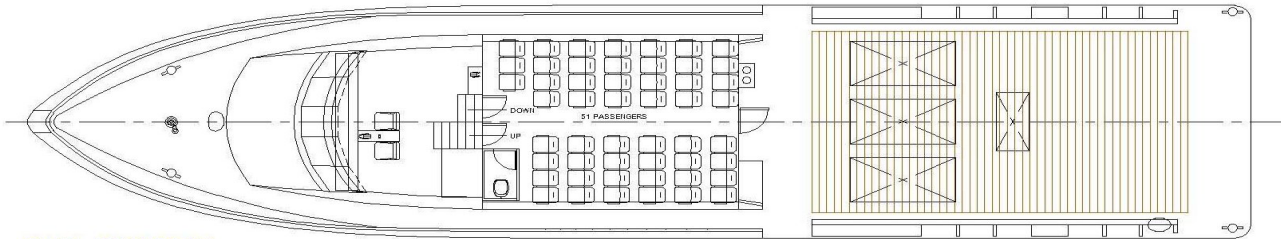
60 Penjuru Lane, Singapore 609214 | Tel: (65) 6265 2855 Fax: (65) 6264 1661
E-mail: swissco@singnet.com.sg | Website: www.swissco.net

GENERAL ARRANGEMENT

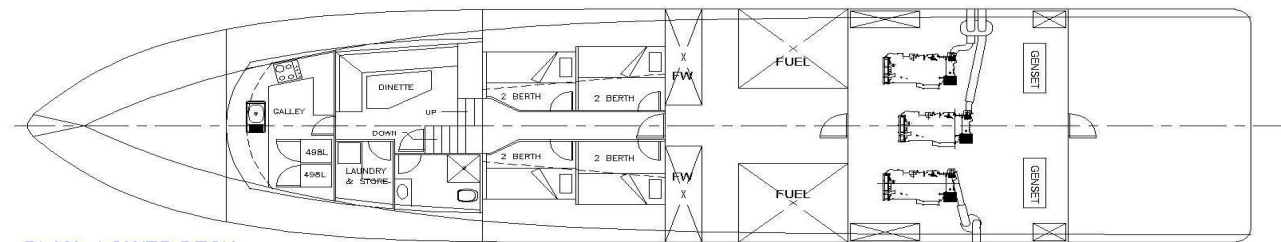
SWISSCO SPEAR



OUTBOARD PROFILE



PLAN - MAIN DECK



PLAN - LOWER DECK



SWISSCO OFFSHORE PTE LTD

60 Penjuru Lane, Singapore 609214 | Tel: (65) 6265 2855 Fax: (65) 6264 1661

E-mail: swissco@singnet.com.sg | Website: www.swissco.net