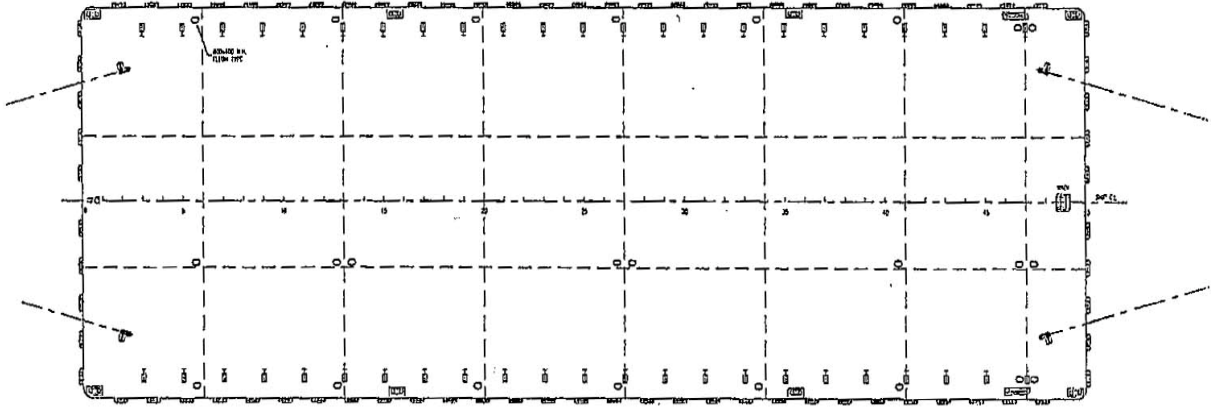


SWISSCO 57

250FT FLAT TOP CARGO BARGE



GENERAL DATA

Registry	: Singapore
Built	: 2008
Official Number	: 394204
Length	: 250 ft (73.15 m)
Breath	: 80 ft (24.38 m)
Depth	: 16 ft (4.88 m)
Draft	: 3.812 m
Classification	: Bureau Veritas
GRT / NRT	: 2306 / 692 tons
Light Weight	: 1,400 tons (approx)
Dead Weight	: 5,000 tons (approx.)

DECK EQUIPMENT

Deck Plate	: 18 mm
Side / Bottom Plate	: 12 mm
Deck Load	: 15 tons/m ²
Other Deck	: 8 double bits mooring bollards
Fitting	1 set Navigation Light stand
	48 pcs Cargo Stanchions
	3,048 mm apart from frame 2 to 48

Last updated on: 20 July 2010

Particulars given herein are without warranty as to accuracy and interest parties must satisfy themselves by inspection or other means of details of the vessel.

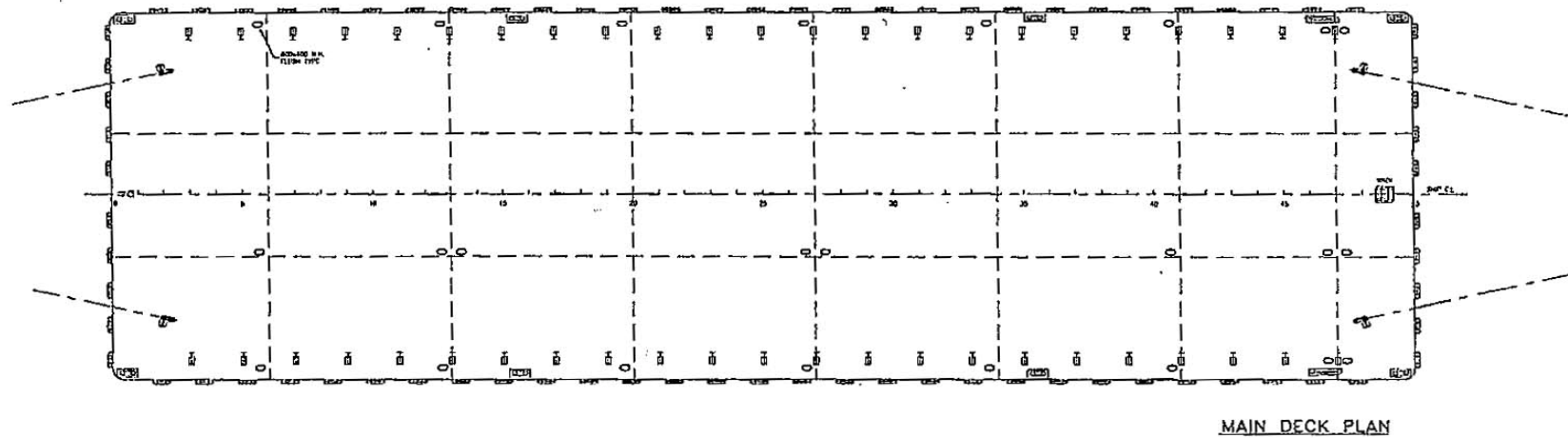
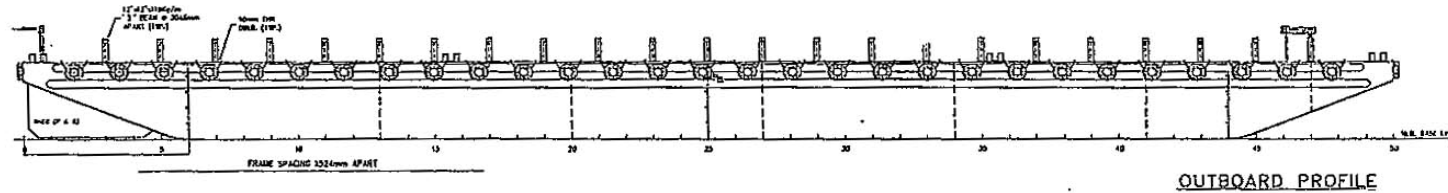


SWISSCO OFFSHORE PTE LTD

60 Penjuru Lane, Singapore 609214 | Tel: (65) 6265 2855 Fax: (65) 6264 1661
E-mail: swissco@singnet.com.sg | Website: www.swissco.net

GENERAL ARRANGEMENT

SWISSCO 57



PRINCIPAL DIMENSIONS

LENGTH OVERALL	76.200 M	{ 250'-0"
BREADTH MOULDED	24.384 M	{ 80'-0"
DEPTH MOULDED	4.880 M	{ 16'-0"
DRAFT MOULDED	3.800 M	{ 12'-4"
DECK LOADING	15 MT/M ²	



SWISSCO OFFSHORE PTE LTD

60 Penjuru Lane, Singapore 609214 | Tel: (65) 6265 2855 Fax: (65) 6264 1661

E-mail: swissco@singnet.com.sg | Website: www.swissco.net