

# SWISSCO 1802

## 180FT FLAT TOP CARGO BARGE



### GENERAL DATA

<b>Registry</b>	:	Singapore
<b>Built</b>	:	2009
<b>Official Number</b>	:	395774
<b>Length</b>	:	180 ft 52.67 m
<b>Breath</b>	:	56 ft (17.07 m)
<b>Depth</b>	:	12 ft (3.66 m)
<b>Draft</b>	:	3.110 m
<b>Classification</b>	:	Germanischer Lloyd
<b>GRT / NRT</b>	:	828 / 249 tons
<b>Light Weight</b>	:	416 tons (approx.)
<b>Dead Weight</b>	:	1,900 tons (approx.)

### DECK EQUIPMENT

<b>Deck Plate</b>	:	12 mm
<b>Side / Bottom Plate</b>	:	9.5 mm
<b>Deck Load</b>	:	10 tons / m <sup>2</sup>
<b>Other Deck Fitting</b>	:	6 Double Bitts
		1 set Navigational Light stand
		Cargo Stanchions fitted
		1 Anchor Windlass with 1 Stockless Anchor

*Last updated on: 22 July 2010*

Particulars given herein are without warranty as to accuracy and interest parties must satisfy themselves by inspection or other means of details of the vessel.

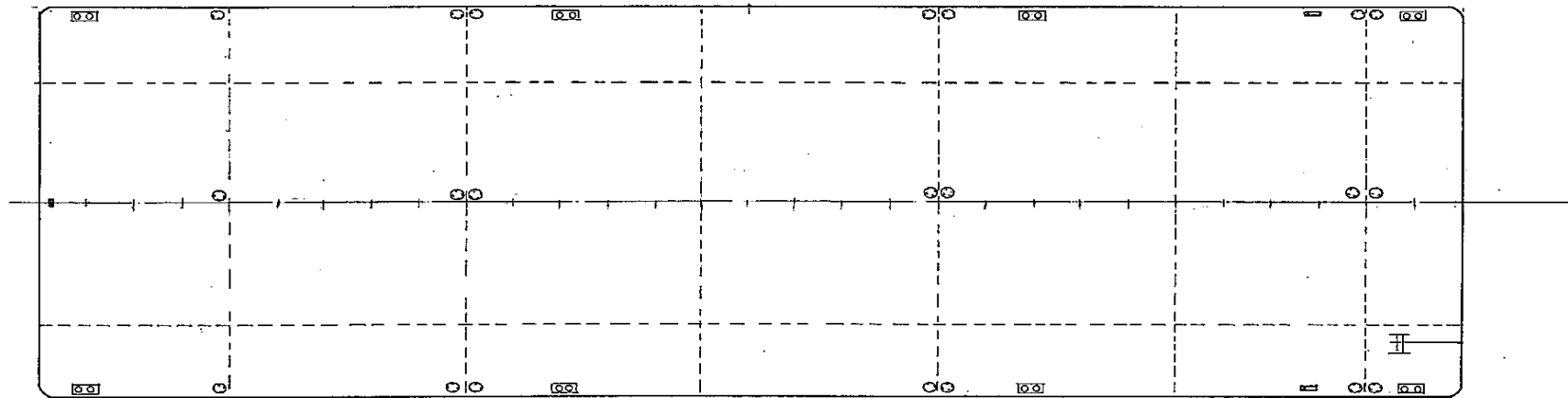
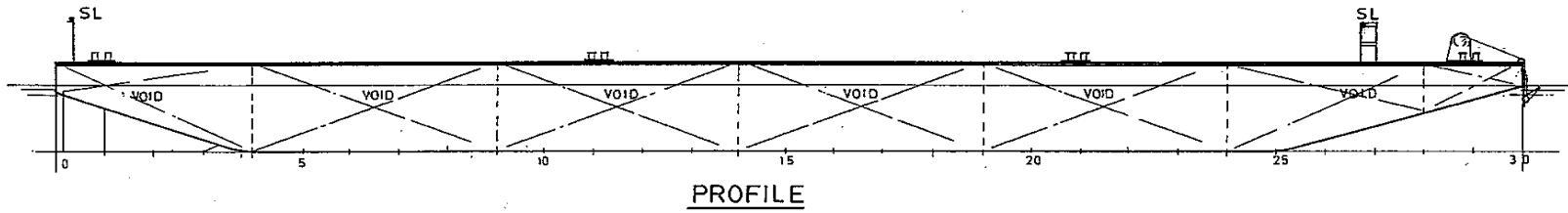


### SWISSCO OFFSHORE PTE LTD

60 Penjuru Lane, Singapore 609214 | Tel: (65) 6265 2855 Fax: (65) 6264 1661  
E-mail: [swissco@singnet.com.sg](mailto:swissco@singnet.com.sg) | Website: [www.swissco.net](http://www.swissco.net)

# GENERAL ARRANGEMENT

## SWISSCO 1802



MAIN PARTICULARS :

LENGTH OA 180' 0"  
BREADTH 56' 0"  
DEPTH 12' 0"  
DECK LOADING 10 T/M2



### SWISSCO OFFSHORE PTE LTD

60 Penjuru Lane, Singapore 609214 | Tel: (65) 6265 2855 Fax: (65) 6264 1661

E-mail: [swissco@singnet.com.sg](mailto:swissco@singnet.com.sg) | Website: [www.swissco.net](http://www.swissco.net)